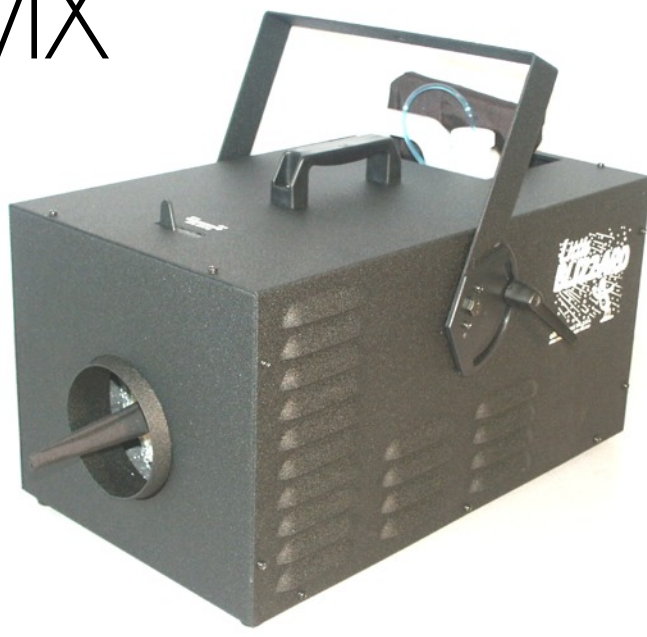


Little Blizzard® DMX



The Little Blizzard® DMX is quieter and is the highest quality, industry standard. It can run continuously without overheating and has a flake size adjustment paddle, two-speed motor, remote control, and DMX on-board. Full digital volume control adds precision to DMX or remote control with 25' cord (7.62m). The round opening increases output 20%. Heavy-duty powder coating reduces the sound and any rust. Includes mounting bracket, remote, 2 speed variable volume, flake size adjuster. Made in the USA.

Specifications

#100241 (120V) #100246 (230v)

Dimensions: 20" x 10" x 12" (51 cm x 25 cm x 30 cm)

Weight: 30 lb (14 kg)

Shipping Weight: 35 lb (16 kg)

Shipping Box Size: 25" x 15" x 16" (64 cm x 38 cm x 41 cm)

Snowflake control options: Pump Volume Control, Two-speed Fan and Flake Size Adjuster lever

Remote Control: On/off and volume control 0-100%

Remote Control cable: 25 ft (7.6 m)

Sound: Little Blizzard® DMX - 73 db

Fluid: CITC Little Blizzard® Fluid available in Basic, Dry, Extra-Dry, Super Extra-Dry, Dry 100 & Ultraviolet

Run Time: Continuous

Electrical Supply: 120 VAC/60Hz - 10 A
230 VAC/50Hz - 5 A

Fuse: 120VAC - 10A/250 V 5x20 mm
230VAC - 5A/250V 5x20 mm

CE approved: CE approved parts

Limited Warranty: One year

Fluids: Little Blizzard Extra Dry, Dry, Dry 100, Super Extra Dry, UV Blue, UV Pink, UV Blue, UB Bluish White, LB32, and Basic



European Distributorship:

White Light Ltd. UK

Sales@WhiteLight.Ltd.uk

 www.facebook.com/CITCFX

(888)786-CITC (425)776-4950 info@citcfx.com www.citcfx.com Everett, WA USA